



## Ron Smith & Associates, Inc.

### Testing Division

Toll Free: 1-866-832-6772 | [www.RonSmithandAssociates.com](http://www.RonSmithandAssociates.com)

Email: [testing@ronsmithandassociates.com](mailto:testing@ronsmithandassociates.com)

---

## Summary Report

### Spring 2019 Tenprint Comparison Proficiency Test #19201

Issued: June 15, 2019

On March 18, 2019, Ron Smith and Associates, Inc. (RS&A) shipped the 2019 Spring Tenprint Proficiency Test #19201. Participants were required to submit their responses no later than May 20, 2019, in order for them to be included in this summary report.

A total of 29 tests were ordered and shipped, with 28 participants returning their responses. This test consisted of four parts: pattern recognition, pre-sentencing packet, unknown deceased identification, and AFIS side-by-side comparisons. It was provided in a hard copy and/or digital copy format.

The results presented in this report reflect whether or not the participants' submitted results agree or disagree with the assigned values, garnered from pre-distribution testing and outlined in ***The Manufacturer's Report*** (Appendix 1). The primary purpose of a Summary Report is to provide an overall documentation of all the submitted responses. It is RS&A's intention to go a step further and provide more meaningful statistical results by analyzing the submitted responses in relationship to the demographics obtained from each of the examiners participating in this proficiency test. All results and statistics for this test will be outlined through graphs and charts found in the remainder of this report.

Prior to distribution of this test, all of the comparison expected responses were determined to be either "Identification" or "Exclusion"; however, we are aware that some agencies allow for a conclusion of "Inconclusive" in their casework. In designing this Proficiency Test, there was no intention to force a participant to render a conclusion which goes beyond their considered opinion. To satisfy this option, participants were allowed to enter "Inconclusive" as a response. Due to the fact that a participant's "Inconclusive" response does not meet the assigned values, it will appear as an inconsistent response in the summary report and be incorporated as such in the statistical analysis. It will be up to each agency to decide if the participant's "Inconclusive" response qualifies as being acceptable under their policies and procedures.

RS&A strives to maintain the confidentiality of all of its clients and participants. All results are obtained and published using randomly generated test codes. RS&A will not release the identity of any participant without the written consent of the participant and/or the agency involved.

For any additional information, please contact the Proficiency Testing Coordinator at [testing@ronsmithandassociates.com](mailto:testing@ronsmithandassociates.com) or call toll free at 1-866-832-6772.

## **Appendix 1**

### **Test Manufacturer's Information**

#### **Spring 2019 Tenprint Proficiency Test #19201**

This test consisted of four parts: pattern recognition, pre-sentencing packet, unknown deceased identification, and AFIS side-by-side comparisons. The test was provided in hard copy photograph and/or digital image formats. The assigned values were determined through the ground truth information and verified through unanimous agreement during pre-distribution testing. The assigned values for each part of the test are as follows:

#### **Part 1: Pattern Recognition**

<b>Image #</b>	<b>Pattern Type</b>
1	Whorl
2	Whorl
3	Whorl
4	Whorl
5	Right Slant Loop
6	Left Slant Loop
7	Whorl
8	Right Slant Loop
9	Whorl
10	Right Slant Loop
11	Left Slant Loop
12	Left Slant Loop
13	Arch
14	Left Slant Loop
15	Right Slant Loop
16	Whorl
17	Right Slant Loop
18	Arch
19	Whorl
20	Whorl

## **Part 2: Pre-Sentencing Packet**

The following are the fingerprints of the same person:

“Most Recent Conviction” and “Prior Conviction #1”

## **Part 3: Unknown Deceased Comparison**

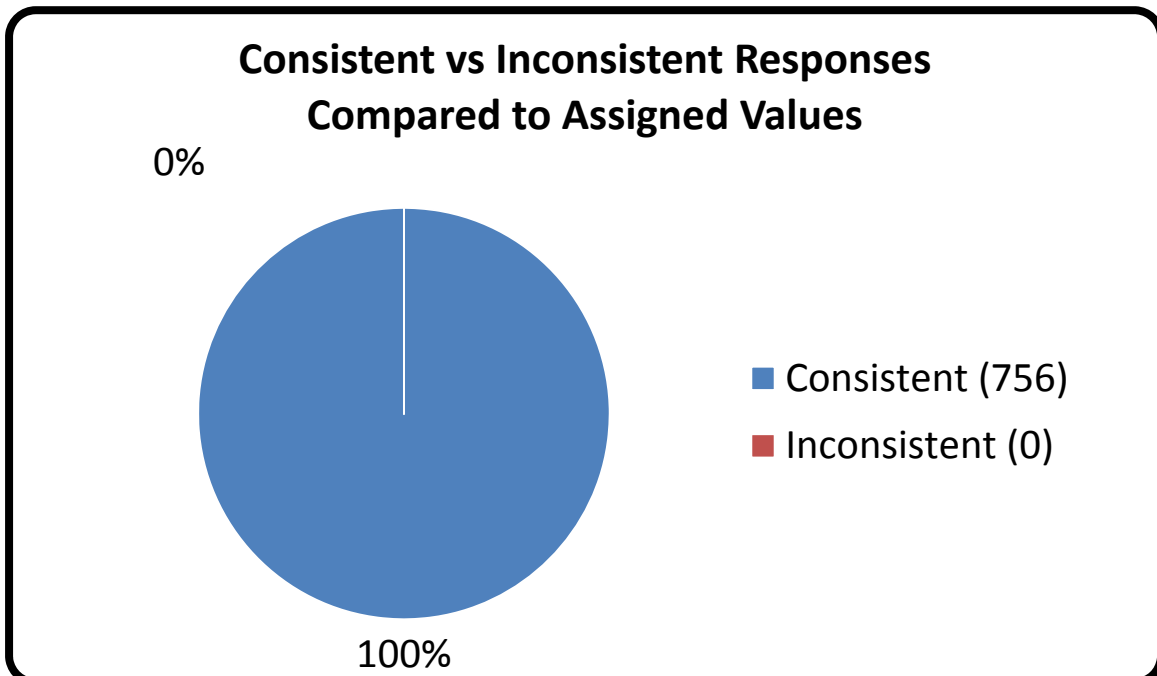
What can you conclude about the Post Mortem fingerprint card?

The known inked fingerprint card #1 WAS made by the same individual whose prints were recorded on the postmortem fingerprint card.

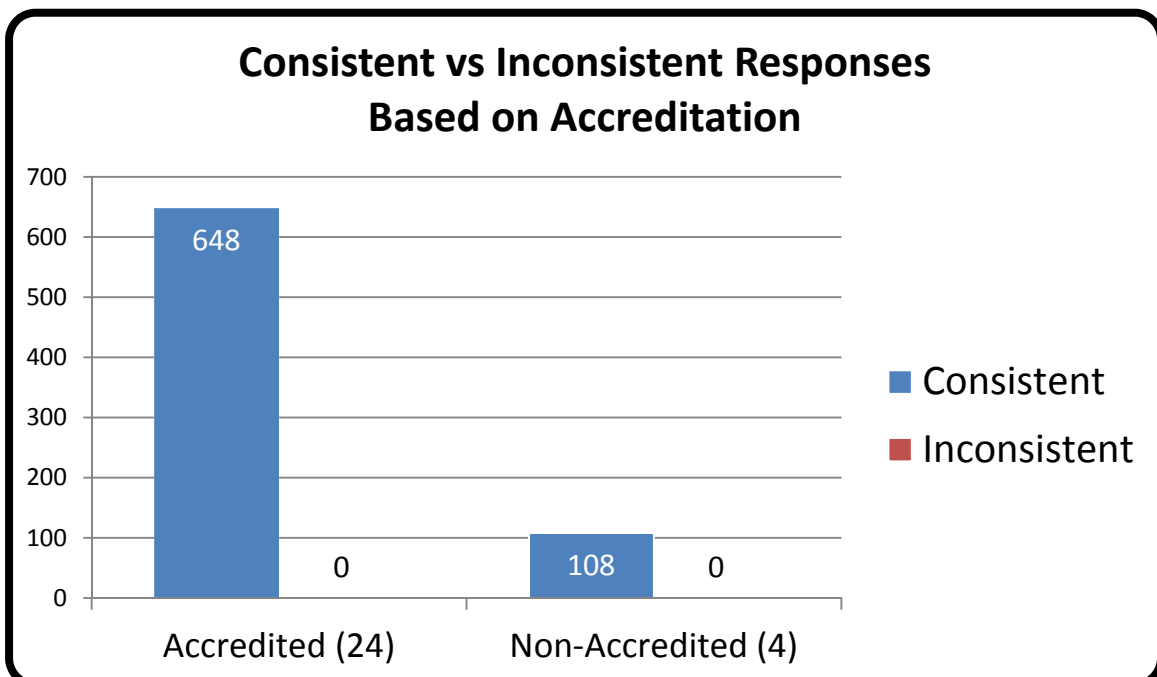
## **Part 4: AFIS Side-by-Side Comparisons**

<b>Comparison #</b>	<b>Conclusion</b>
1	Exclusion
2	Identification
3	Exclusion
4	Identification
5	Identification

## Appendix 2



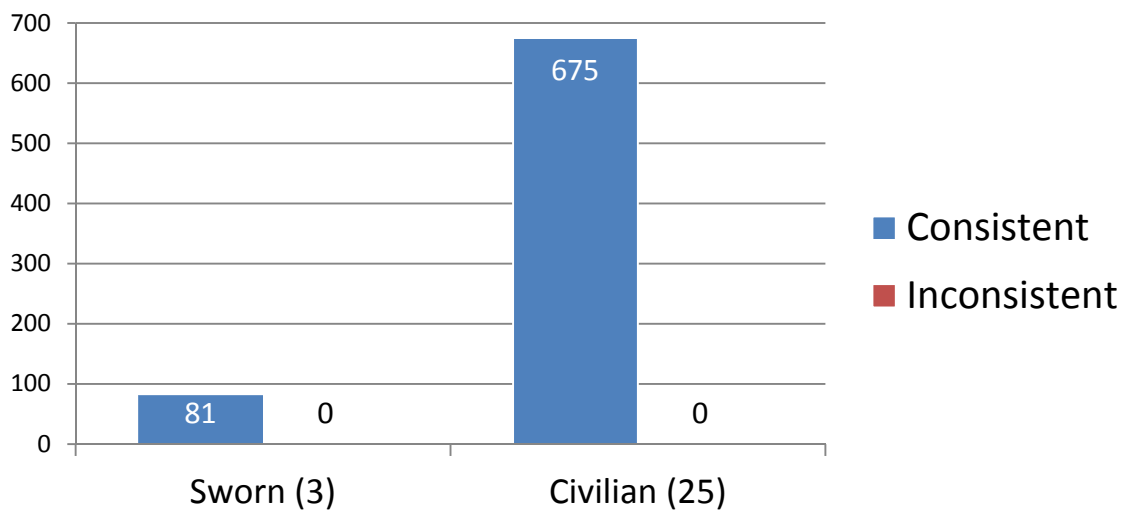
## Appendix 3



\*Numerical values shown are based on **28 participant submissions, each with 27 responses**, equaling **756 total responses**. \*For further information, please read *Manufacturer's Additional Observations* on the final page of this report.

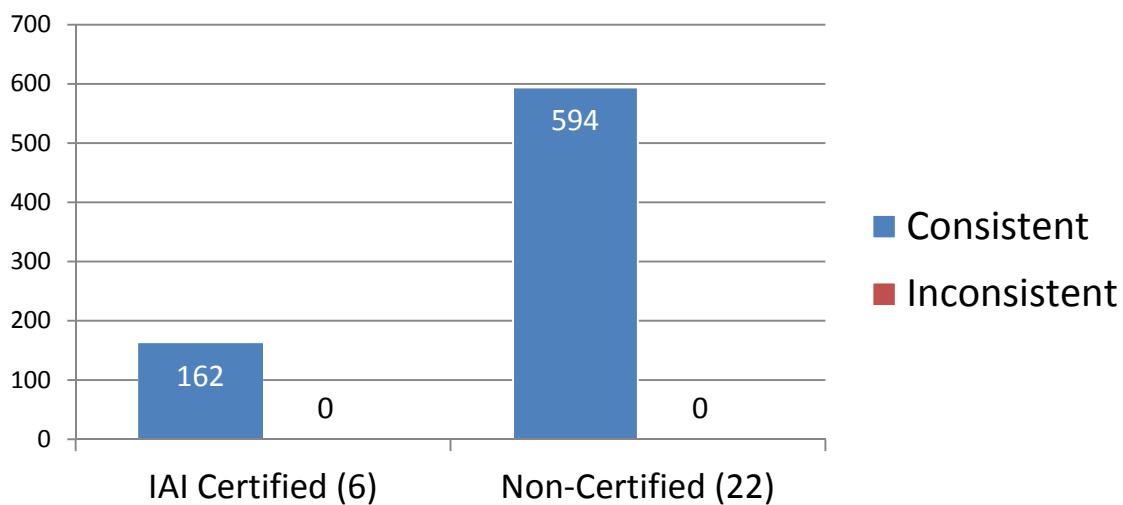
## Appendix 4

### Consistent vs Inconsistent Responses Based on Sworn or Civilian Status



## Appendix 5

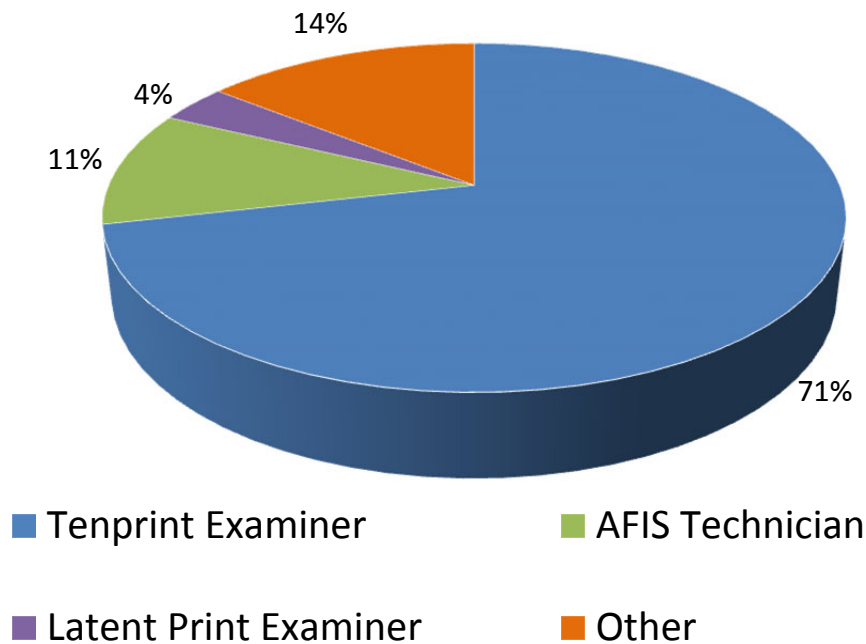
### Consistent vs Inconsistent Responses Based on IAI Certification Status



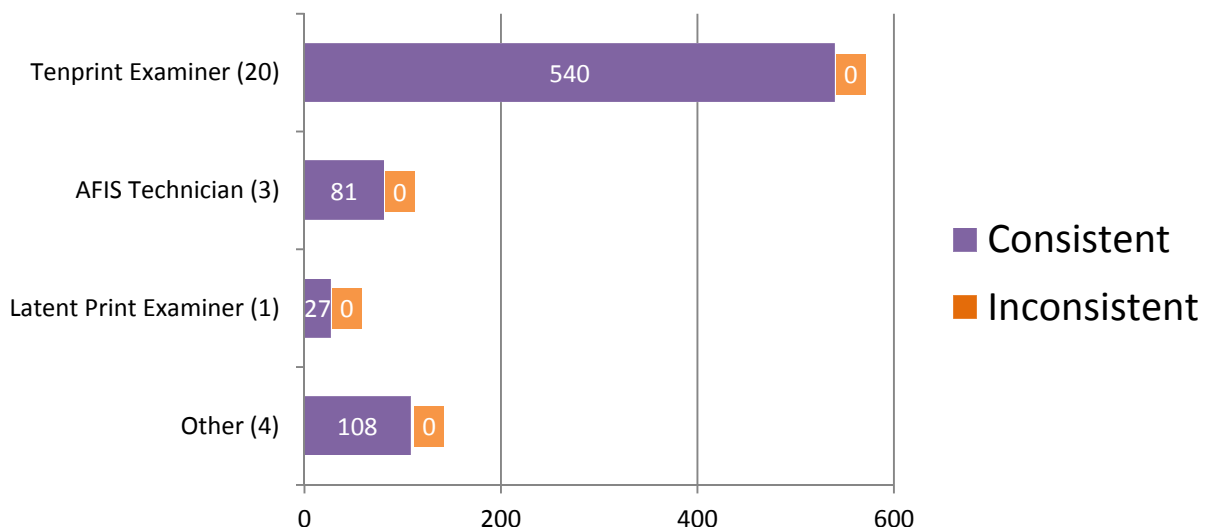
\*Numerical values shown are based on **28 participant submissions, each with 27 responses**, equaling **756 total responses**. \*For further information, please read *Manufacturer's Additional Observations* on the final page of this report.

## Appendix 6

**Percentage of Participants  
Based on Primary Job Position**



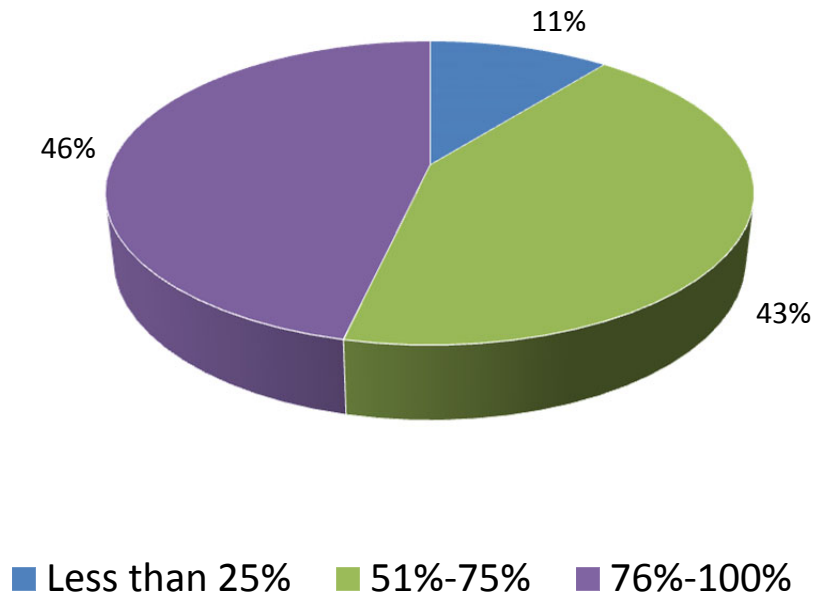
**Consistent vs Inconsistent Responses  
Based on Primary Job Position**



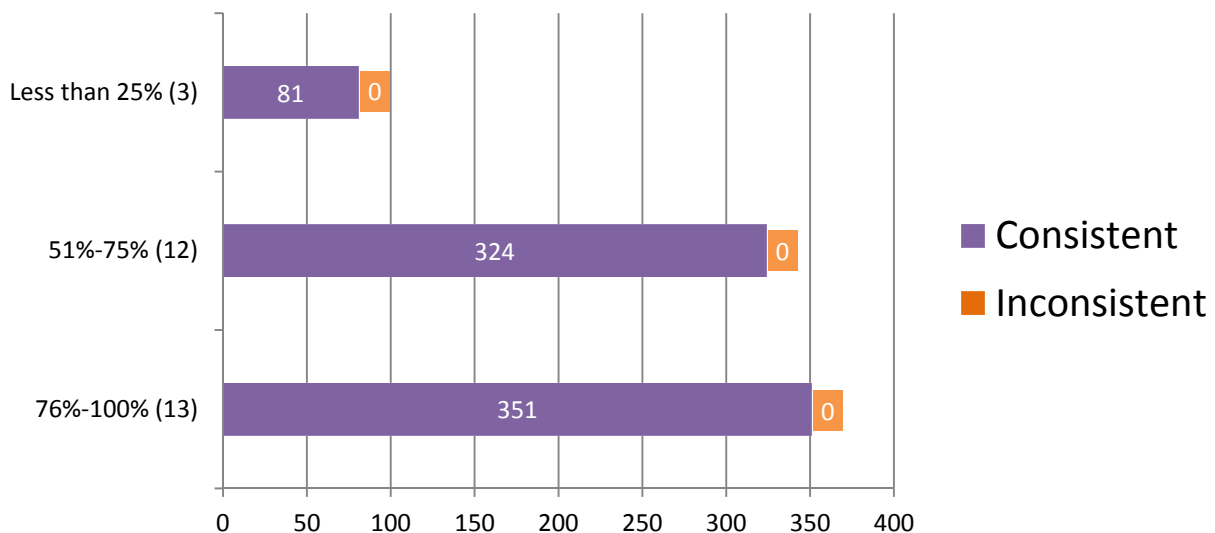
\*Numerical values shown are based on **28 participant submissions, each with 27 responses**, equaling **756 total responses**. \*For further information, please read *Manufacturer's Additional Observations* on the final page of this report.

## Appendix 7

### Percentage of Participants Based on Time Devoted to Tenprint Casework



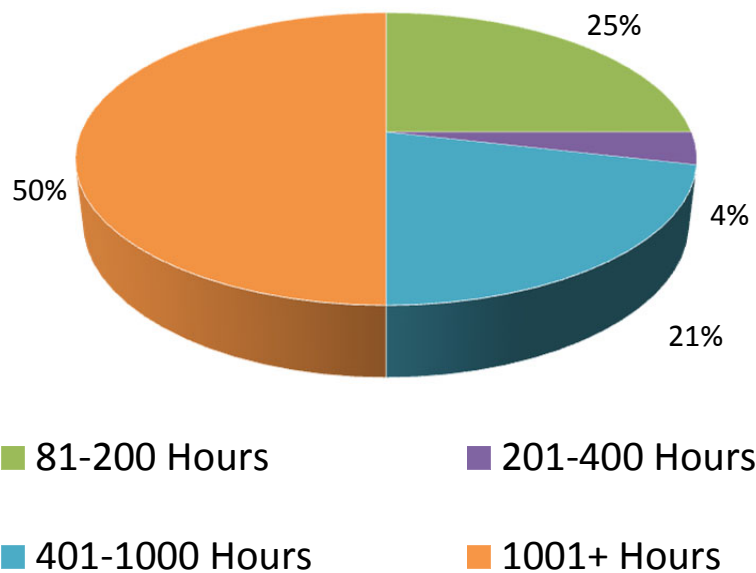
### Consistent vs Inconsistent Responses Based on Time Devoted to Tenprint Casework



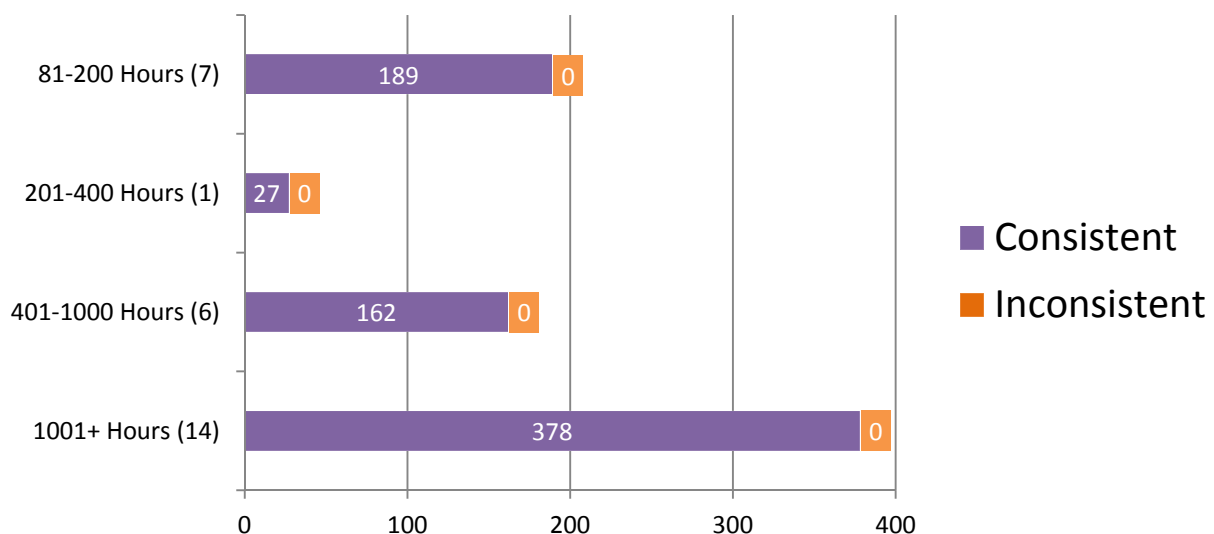
\*Numerical values shown are based on **28 participant submissions, each with 27 responses, equaling 756 total responses.** \*For further information, please read *Manufacturer's Additional Observations* on the final page of this report.

## Appendix 8

**Percentage of Participants  
Based on Hours of Tenprint Training Completed**



**Consistent vs Inconsistent Responses  
Based on Hours of Tenprint Training Completed**

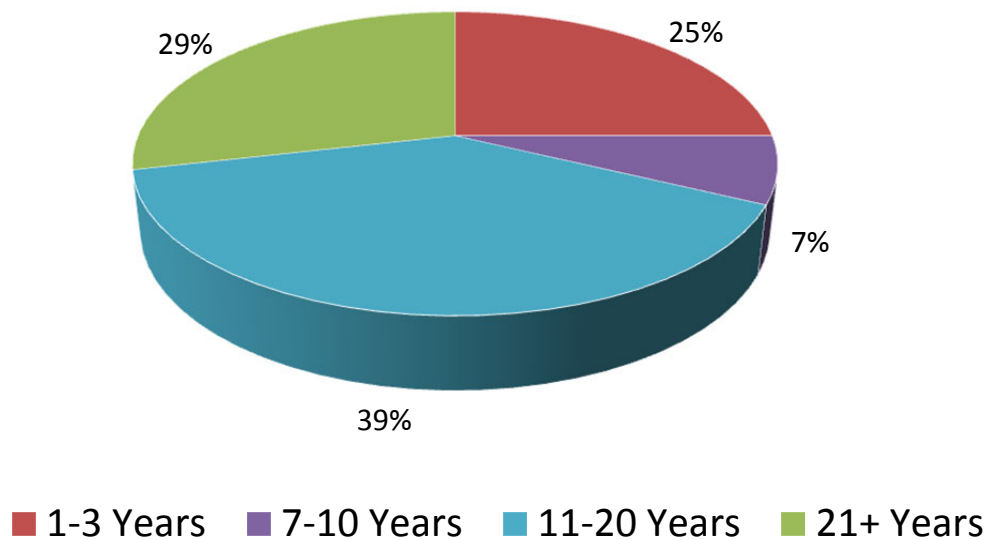


\*Numerical values shown are based on **28 participant submissions, each with 27 responses**, equaling **756 total responses**. \*For further information, please read *Manufacturer's Additional Observations* on the final page of this report.

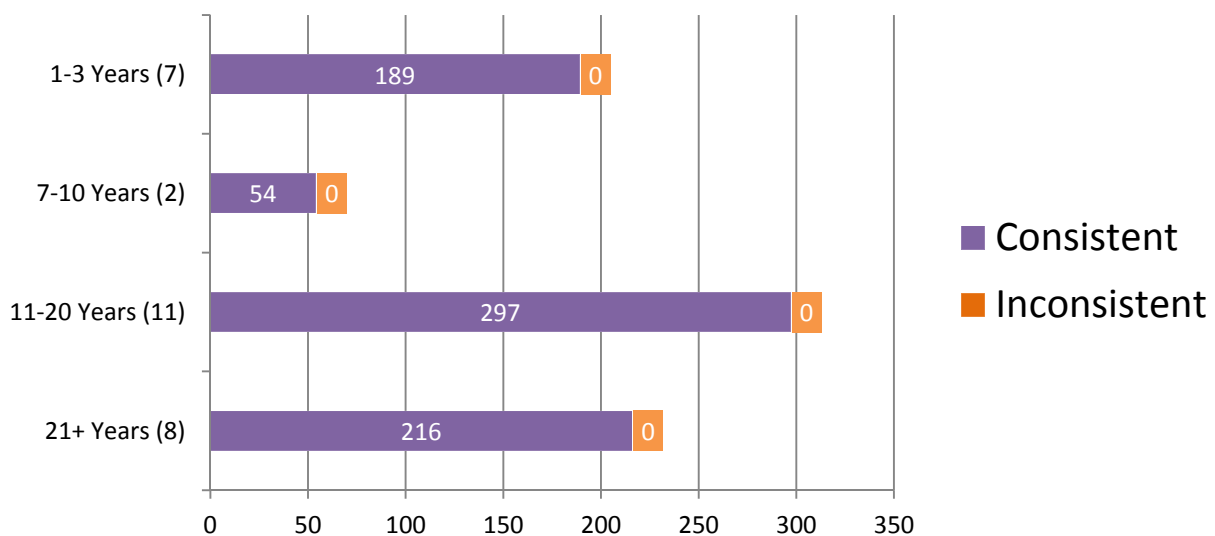


## Appendix 9

**Percentage of Participants  
Based on Years of Experience in Tenprints**



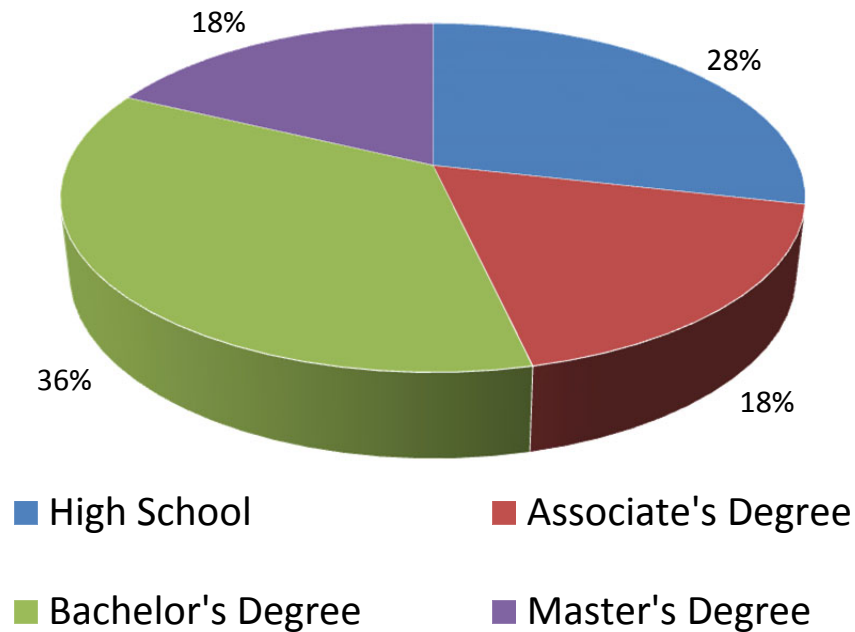
**Consistent vs Inconsistent Responses  
Based on Years of Experience in Tenprints**



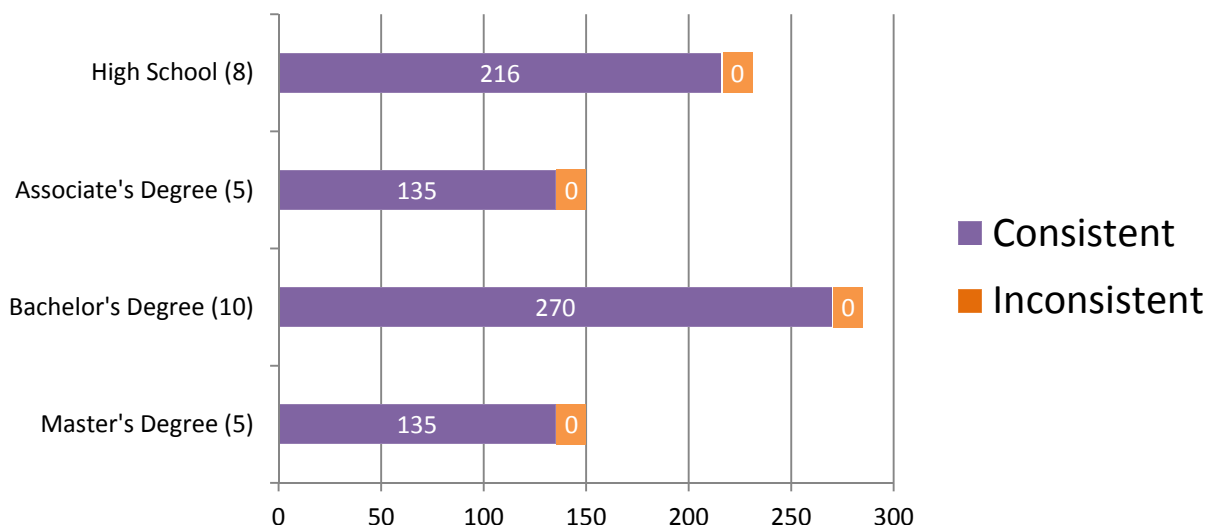
\*Numerical values shown are based on **28 participant submissions, each with 27 responses**, equaling **756 total responses**. \*For further information, please read *Manufacturer's Additional Observations* on the final page of this report.

## Appendix 10

**Percentage of Participants  
Based on Highest Level of Education Completed**

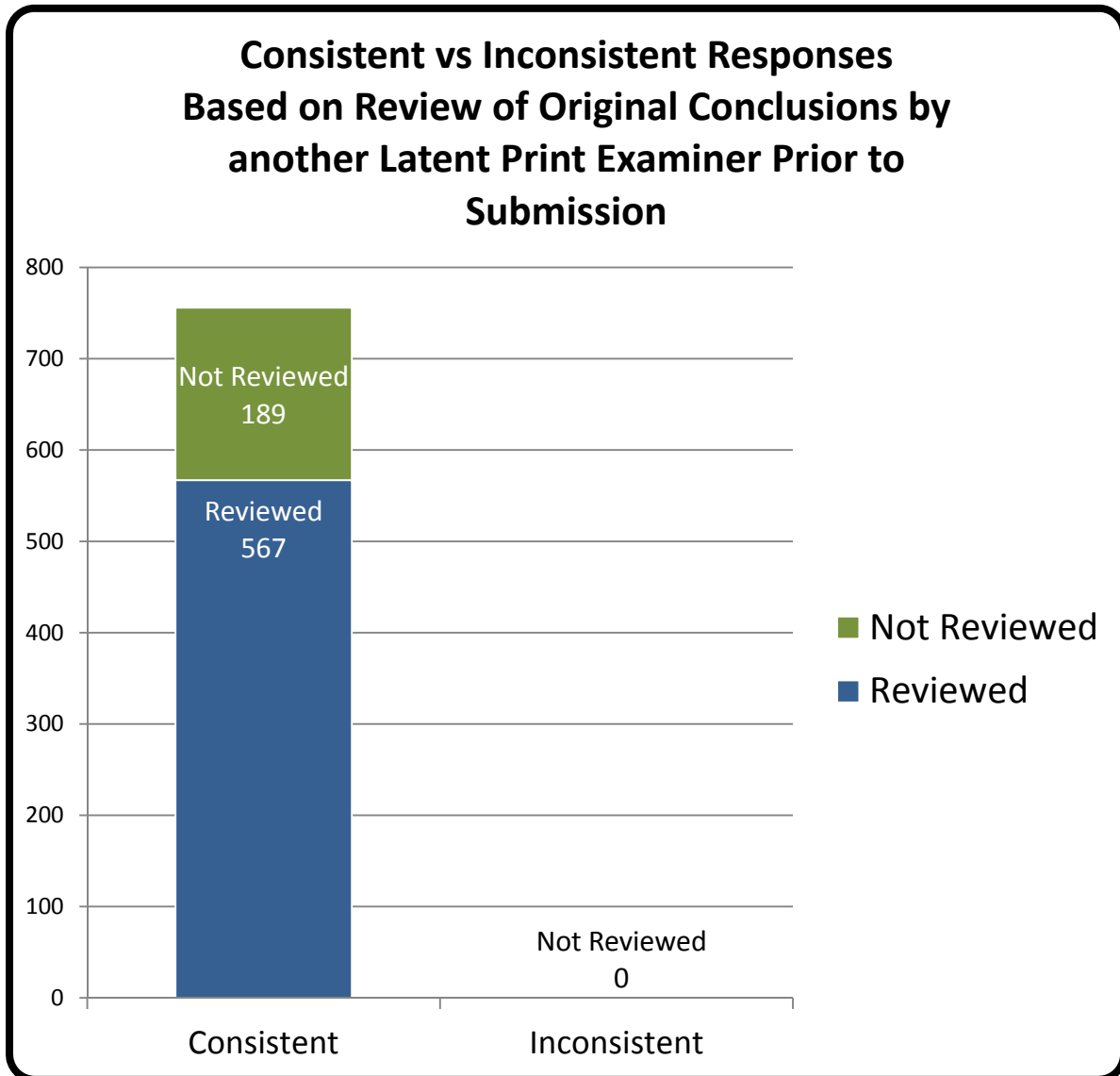


**Consistent vs Inconsistent Responses  
Based on Highest Level of Education Completed**



\*Numerical values shown are based on **28 participant submissions, each with 27 responses, equaling 756 total responses**. \*For further information, please read **Manufacturer's Additional Observations** on the final page of this report.

## Appendix 11



\*Numerical values shown are based on **28 participant submissions, each with 27 responses**, equaling **756 total responses**. \*For further information, please read *Manufacturer's Additional Observations* on the final page of this report.

## Appendix 12

### Participant Responses listed by Test Code

		Part 1																			
		1	2	3	4	5	6	7	8	9	10	11	12	13	14	15	16	17	18	19	20
Assigned Values		W	W	W	W	RSL	LSL	W	RSL	W	RSL	LSL	LSL	A	LSL	RSL	W	RSL	A	W	W
Test Code	3231W19201	W	W	W	W	RSL	LSL	W	RSL	W	RSL	LSL	LSL	A	LSL	RSL	W	RSL	A	W	W
	719N19201	W	W	W	W	RSL	LSL	W	RSL	W	RSL	LSL	LSL	A	LSL	RSL	W	RSL	A	W	W
	562C19201	W	W	W	W	RSL	LSL	W	RSL	W	RSL	LSL	LSL	A	LSL	RSL	W	RSL	A	W	W
	4009X19201	W	W	W	W	RSL	LSL	W	RSL	W	RSL	LSL	LSL	A	LSL	RSL	W	RSL	A	W	W
	4022F19201	W	W	W	W	RSL	LSL	W	RSL	W	RSL	LSL	LSL	A	LSL	RSL	W	RSL	A	W	W
	2829M19201	W	W	W	W	RSL	LSL	W	RSL	W	RSL	LSL	LSL	A	LSL	RSL	W	RSL	A	W	W
	143U19201	W	W	W	W	RSL	LSL	W	RSL	W	RSL	LSL	LSL	A	LSL	RSL	W	RSL	A	W	W
	7116F19201	W	W	W	W	RSL	LSL	W	RSL	W	RSL	LSL	LSL	A	LSL	RSL	W	RSL	A	W	W
	3654G19201	W	W	W	W	RSL	LSL	W	RSL	W	RSL	LSL	LSL	A	LSL	RSL	W	RSL	A	W	W
	8881E19201	W	W	W	W	RSL	LSL	W	RSL	W	RSL	LSL	LSL	A	LSL	RSL	W	RSL	A	W	W
	9968O19201	W	W	W	W	RSL	LSL	W	RSL	W	RSL	LSL	LSL	A	LSL	RSL	W	RSL	A	W	W
	1165N19201	W	W	W	W	RSL	LSL	W	RSL	W	RSL	LSL	LSL	A	LSL	RSL	W	RSL	A	W	W
	3048K19201	W	W	W	W	RSL	LSL	W	RSL	W	RSL	LSL	LSL	A	LSL	RSL	W	RSL	A	W	W
	7652A19201	W	W	W	W	RSL	LSL	W	RSL	W	RSL	LSL	LSL	A	LSL	RSL	W	RSL	A	W	W
	9425X19201	W	W	W	W	RSL	LSL	W	RSL	W	RSL	LSL	LSL	A	LSL	RSL	W	RSL	A	W	W
	1952I19201	W	W	W	W	RSL	LSL	W	RSL	W	RSL	LSL	LSL	A	LSL	RSL	W	RSL	A	W	W
	2647G19201	W	W	W	W	RSL	LSL	W	RSL	W	RSL	LSL	LSL	A	LSL	RSL	W	RSL	A	W	W
	5890E19201	W	W	W	W	RSL	LSL	W	RSL	W	RSL	LSL	LSL	A	LSL	RSL	W	RSL	A	W	W
	4541O19201	W	W	W	W	RSL	LSL	W	RSL	W	RSL	LSL	LSL	A	LSL	RSL	W	RSL	A	W	W
	7431X19201	W	W	W	W	RSL	LSL	W	RSL	W	RSL	LSL	LSL	A	LSL	RSL	W	RSL	A	W	W
	6800C19201	W	W	W	W	RSL	LSL	W	RSL	W	RSL	LSL	LSL	A	LSL	RSL	W	RSL	A	W	W
	4539Y19201	W	W	W	W	RSL	LSL	W	RSL	W	RSL	LSL	LSL	A	LSL	RSL	W	RSL	A	W	W
	4109R19201	W	W	W	W	RSL	LSL	W	RSL	W	RSL	LSL	LSL	A	LSL	RSL	W	RSL	A	W	W
	3958E19201	W	W	W	W	RSL	LSL	W	RSL	W	RSL	LSL	LSL	A	LSL	RSL	W	RSL	A	W	W
	4810H19201	W	W	W	W	RSL	LSL	W	RSL	W	RSL	LSL	LSL	A	LSL	RSL	W	RSL	A	W	W
	6874X19201	W	W	W	W	RSL	LSL	W	RSL	W	RSL	LSL	LSL	A	LSL	RSL	W	RSL	A	W	W
	6975F19201	W	W	W	W	RSL	LSL	W	RSL	W	RSL	LSL	LSL	A	LSL	RSL	W	RSL	A	W	W
	6148W19201	W	W	W	W	RSL	LSL	W	RSL	W	RSL	LSL	LSL	A	LSL	RSL	W	RSL	A	W	W

	Part 2	Part 3	Part 4				
	Pre-Sentencing	Postmortem ID	1	2	3	4	5
<i>Assigned Values</i>	<i>MRC &amp; PC1</i>	<i>Was made by</i>	<i>EXC</i>	<i>ID</i>	<i>EXC</i>	<i>ID</i>	<i>ID</i>
3231W19201	MRC & PC1	ID KF1	EXC	ID	EXC	ID	ID
719N19201	MRC & PC1	ID KF1	EXC	ID	EXC	ID	ID
562C19201	MRC & PC1	ID KF1	EXC	ID	EXC	ID	ID
4009X19201	MRC & PC1	ID KF1	EXC	ID	EXC	ID	ID
4022F19201	MRC & PC1	ID KF1	EXC	ID	EXC	ID	ID
2829M19201	MRC & PC1	ID KF1	EXC	ID	EXC	ID	ID
143U19201	MRC & PC1	ID KF1	EXC	ID	EXC	ID	ID
7116F19201	MRC & PC1	ID KF1	EXC	ID	EXC	ID	ID
3654G19201	MRC & PC1	ID KF1	EXC	ID	EXC	ID	ID
8881E19201	MRC & PC1	ID KF1	EXC	ID	EXC	ID	ID
9968O19201	MRC & PC1	ID KF1	EXC	ID	EXC	ID	ID
1165N19201	MRC & PC1	ID KF1	EXC	ID	EXC	ID	ID
3048K19201	MRC & PC1	ID KF1	EXC	ID	EXC	ID	ID
7652A19201	MRC & PC1	ID KF1	EXC	ID	EXC	ID	ID
9425X19201	MRC & PC1	ID KF1	EXC	ID	EXC	ID	ID
1952I19201	MRC & PC1	ID KF1	EXC	ID	EXC	ID	ID
2647G19201	MRC & PC1	ID KF1	EXC	ID	EXC	ID	ID
5890E19201	MRC & PC1	ID KF1	EXC	ID	EXC	ID	ID
4541O19201	MRC & PC1	ID KF1	EXC	ID	EXC	ID	ID
7431X19201	MRC & PC1	ID KF1	EXC	ID	EXC	ID	ID
6800C19201	MRC & PC1	ID KF1	EXC	ID	EXC	ID	ID
4539Y19201	MRC & PC1	ID KF1	EXC	ID	EXC	ID	ID
4109R19201	MRC & PC1	ID KF1	EXC	ID	EXC	ID	ID
3958E19201	MRC & PC1	ID KF1	EXC	ID	EXC	ID	ID
4810H19201	MRC & PC1	ID KF1	EXC	ID	EXC	ID	ID
6874X19201	MRC & PC1	ID KF1	EXC	ID	EXC	ID	ID
6975F19201	MRC & PC1	ID KF1	EXC	ID	EXC	ID	ID
6148W19201	MRC & PC1	ID KF1	EXC	ID	EXC	ID	ID

\*\*Arch=A, Right Slant Loop=RSL, Left Slant Loop=LSL, Whorl=W, Most Recent Conviction=MRC, Prior Conviction #1=PC1, Known Fingerprint Card #1 = KF1, Identification=ID, Exclusion=EXC, Inconclusive=INC, None of the above=None\*\*

## Totals

	Part 1																			
	1	2	3	4	5	6	7	8	9	10	11	12	13	14	15	16	17	18	19	20
Assigned Values	W	W	W	W	RSL	LSL	W	RSL	W	RSL	LSL	LSL	A	LSL	RSL	W	RSL	A	W	W
Consistent Responses	28	28	28	28	28	28	28	28	28	28	28	28	28	28	28	28	28	28	28	28
Inconsistent Responses	0	0	0	0	0	0	0	0	0	0	0	0	0	0	0	0	0	0	0	0
Percentage of Consistent Responses	100	100	100	100	100	100	100	100	100	100	100	100	100	100	100	100	100	100	100	100

	Part 2	Part 3	Part 4				
	Pre-Sentencing	Was made by	1	2	3	4	5
Assigned Values	MRC & PC1	ID KF1	EXC	ID	EXC	ID	ID
Consistent Responses	28	28	28	28	28	28	28
Inconsistent Responses	0	0	0	0	0	0	0
Percentage of Consistent Responses	100	100	100	100	100	100	100

## Participant's Additional Comments

Test ID	Comments
4009X19201	Part 3 did not have "Brad Cluff" labeled on the known fingerprint card per the instructions. Glad to see the website entry description and entry was corrected.
5890E19201	The heading for the on-line results page regarding Part 3 is incorrect. The comparisons are related to an "Unknown Deceased" not "Fraudulent Checks".

## Manufacturer's Additional Observations

Based upon a review of the all submitted responses, the following observations were noted:

- Regardless of accreditation status, civilian or sworn status, IAI certification status, primary job position, the amount of time devoted to Tenprint examination, the number of hours of formal training in Tenprint examination, the years of experience, the level of education or participants' having their responses reviewed prior to submission; participants performed equally well on the test.

**Authorized by:** Ron Smith, President

**Issue Date:** June 24, 2019